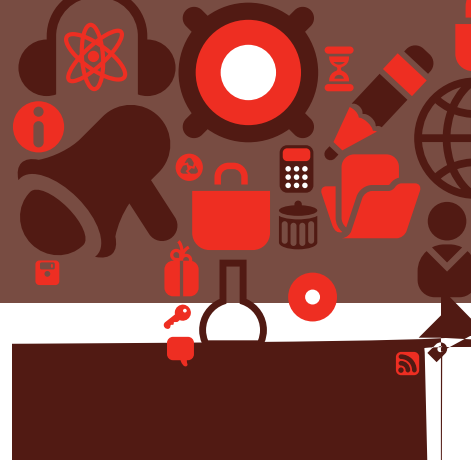


# HAST



A  B  C  D

Łtuv" o ctm"cpf"vjgp" o ctm"{qwt"pgy"ejqkeg0

**Do not:**

What are the tests like?

~~11/12/13~~

**HB B**

**1**

Writing your answers

Here are some practice examples from each test.

**PASSAGE**

**3 Written Expression**

uvw o r { " uvtgpi vj 0" Kvu " Ł i wtg " cpf " o qxg o gpvu. " kh " vjg { "

**THOUGHT and CONTENT**

v y gpv { / Ł xg " cpf " vjktv { " r qwpfu " 000 " Vjg " pgem " ku " vj kem "

**STRUCTURE and ORGANISATION**

j qddnkpi. " qt " u j wh ł kpi. " uq o gv j kpi "

**EXPRESSION, STYLE and MECHANICS**

vjg " gzrtguukxgpguu " cpf " ł wgpe { " qh " vjg " ncp i wc ig

Now read the verse and answer Questions 4 and 5.

Questions 1 and 2 refer to the following information:

F G L O P S W

*The Wombat*

4

- A
- B
- C
- D

5

- A
- B
- C
- D

**Answers**

1 D    2 A    3 B    4 B    5 A

1

- A
- B
- C
- D

2

- A
- B
- C
- D

3 Vjg"Łtuv"fkic tco"ujqyu"cpw o dgt"uswctg"

|    |    |     |
|----|----|-----|
| 2  | 2  | 4   |
| 7  | 5  | 35  |
| 14 | 10 | 140 |

|   |   |    |
|---|---|----|
| 3 | 8 |    |
| 4 |   | 20 |
|   |   | *  |

\*

- A
- B
- C
- D

4

A  
B  
C  
D

5

A  
B  
C